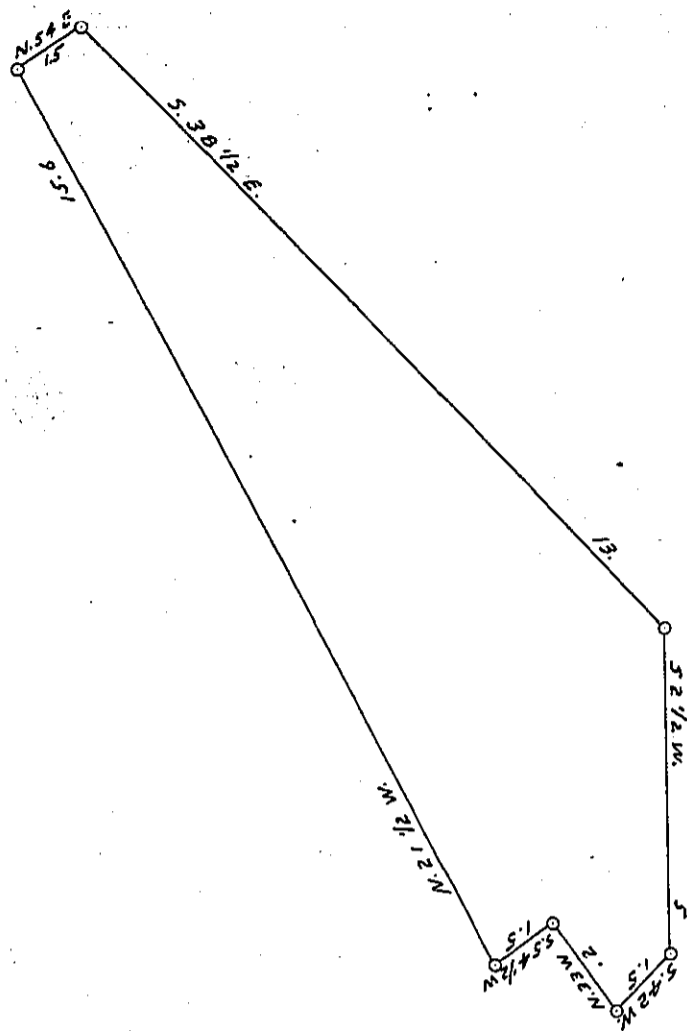
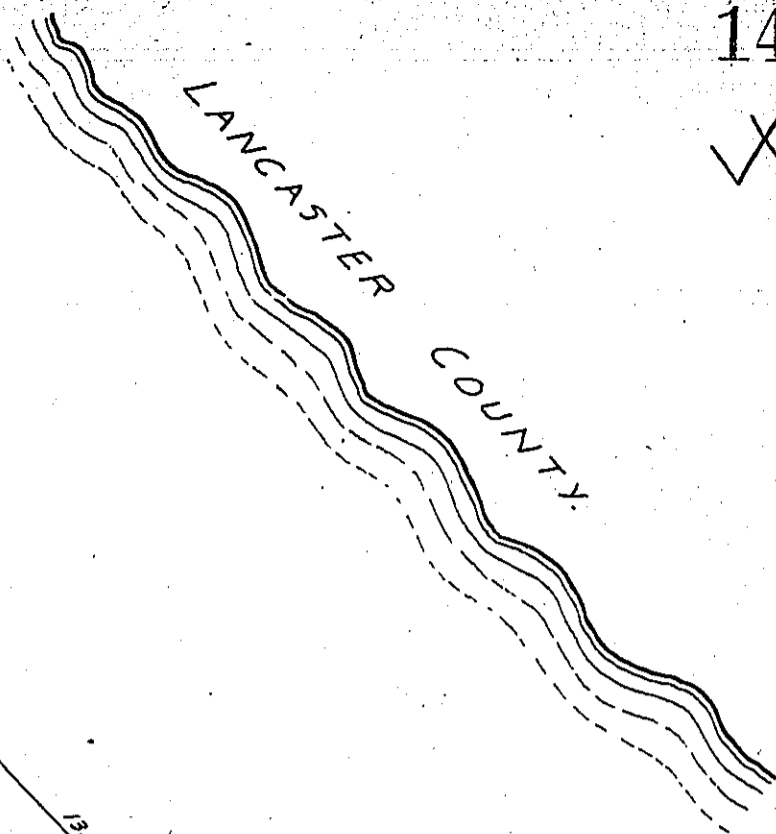
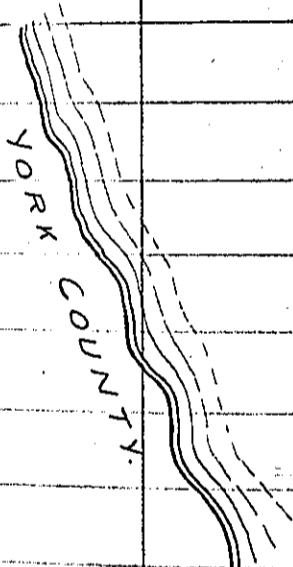




Hillon's Rock.



Situated about 4 perches immediately below Hillon's Rock =



Draught of an Island in the Susquehanna River (called "Boyd's Watch," in Fulton township Lancaster County, containing 58 perches, strict measure. Surveyed, November 3<sup>rd</sup> 1862, in pursuance of a Warrant dated October 27<sup>th</sup> 1862, granted to S. W. P. Boyd =

John C. Lewis, Surry for Lan<sup>s</sup> Co. =

To Henry Souther Esq<sup>r</sup> }  
Surveyor General, Pa }

IN TESTIMONY that the above is a copy of the original remaining on file in the Department of Internal Affairs of Pennsylvania, made conformably to an Act of Assembly approved the 16th day of February, 1833, I have hereunto set my Hand and caused the Seal of said Department to be affixed at Harrisburg, this twenty-ninth day of February 1904.

*Anna P. Benson*  
Secretary of Internal Affairs.